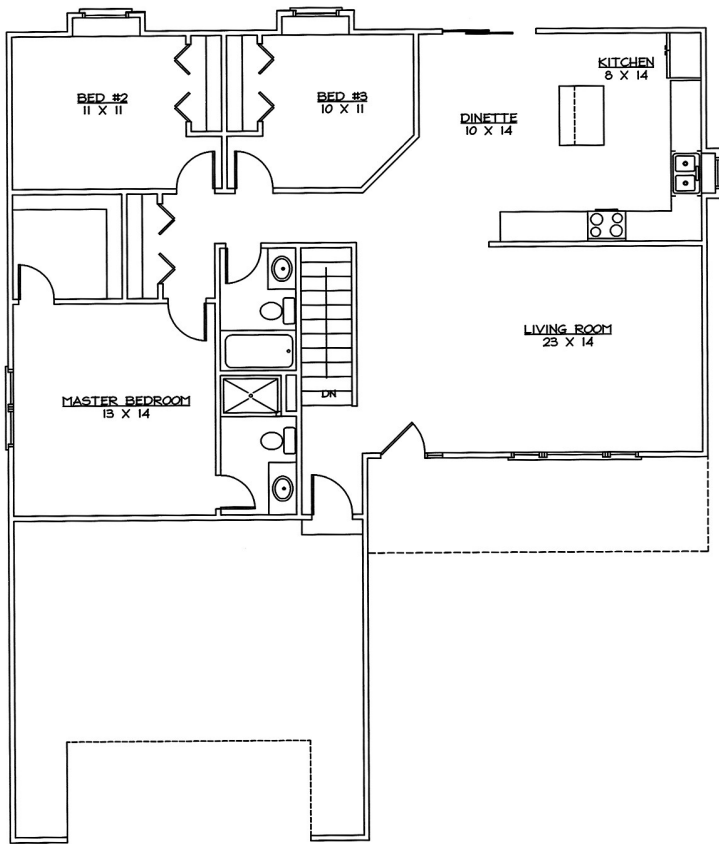
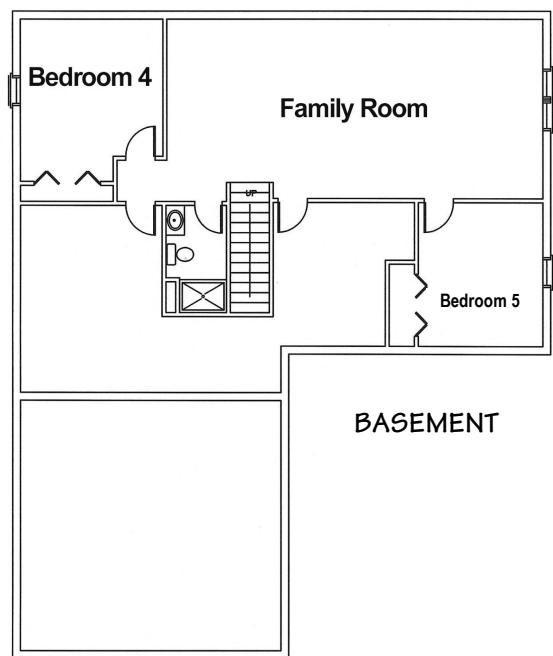


# THE ALTAMONT CRAFTSMAN



MAIN FLOOR - 1396 through 1448 Sq. Ft.

Vaulted ceilings with an opening between the living and kitchen areas, gives the Altamont a spacious feeling. A large eat in kitchen, rounded walls, plant shelves, and two full baths, add to the many features this home has to offer.



\*Optional room layout shown. Basement finish is not standard.

Underwood Construction Company, LLC. reserves the right to alter or discontinue these architectural plans and specifications. Slight variations in specifications do not incur any obligation on the part of the builder. Some features in the models shown are optional and therefore have additional costs associated with them. All dimensions and footage calculations are approximate. Actual designs may vary. These renderings are provided for illustrative and marketing purposes only and are subject to change. No reproductions or other use of these plans may be made without the express written consent of Underwood Construction Company, LLC.

**UNDERWOOD**

● CONSTRUCTION COMPANY L.L.C. ●

[www.BestHomesBuilt.com](http://www.BestHomesBuilt.com)