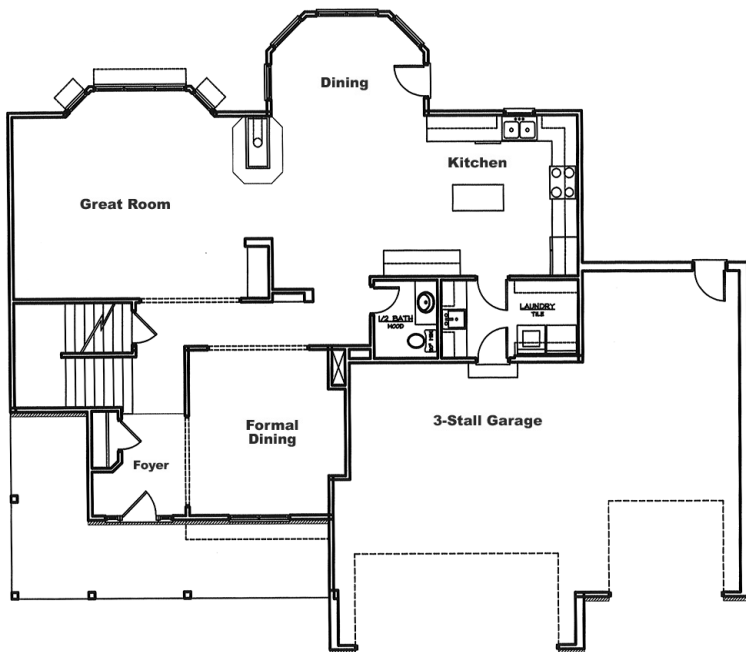


# THE CAITLYN II



The main floor of this two story has everything you could want in a home. An impressive two-story foyer, a hearth room with a cozy see-through fireplace to a spacious great room, a center island with snack bar, a large utility room with laundry sink and cabinets, and a formal dining room with a recessed hutch area. Upstairs the master

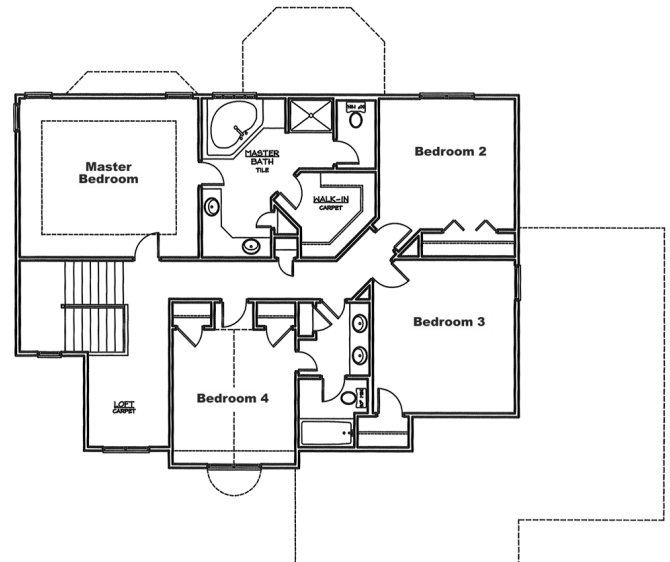
suite with large walk-in closet, vanity areas for two, along with a second bath with two sinks for the remaining three bedrooms make this a “must-have” home.



MAIN FLOOR - 1253 Sq. Ft.

2ND FLOOR - 1349 Sq. Ft.

TOTAL - 2602 Sq. Ft.



**UNDERWOOD**

● CONSTRUCTION COMPANY L.L.C. ●

[www.BestHomesBuilt.com](http://www.BestHomesBuilt.com)

\*Optional room layout shown. Basement finish is not standard.

Underwood Construction Company, LLC. reserves the right to alter or discontinue these architectural plans and specifications. Slight variations in specifications do not incur any obligation on the part of the builder. Some features in the models shown are optional and therefore have additional costs associated with them. All dimensions and footage calculations are approximate. Actual designs may vary. These renderings are provided for illustrative and marketing purposes only and are subject to change. No reproductions or other use of these plans may be made without the express written consent of Underwood Construction Company, LLC.