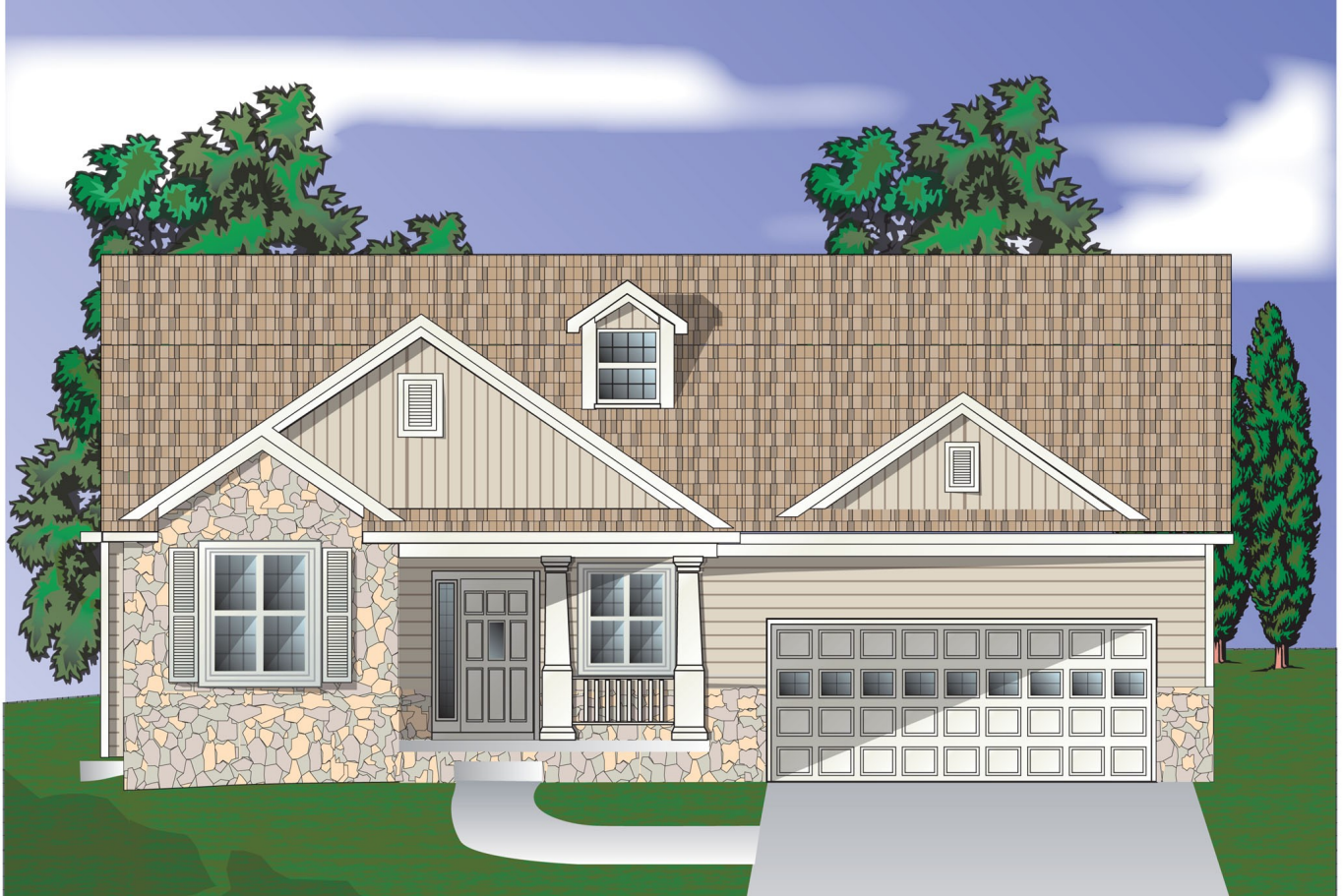
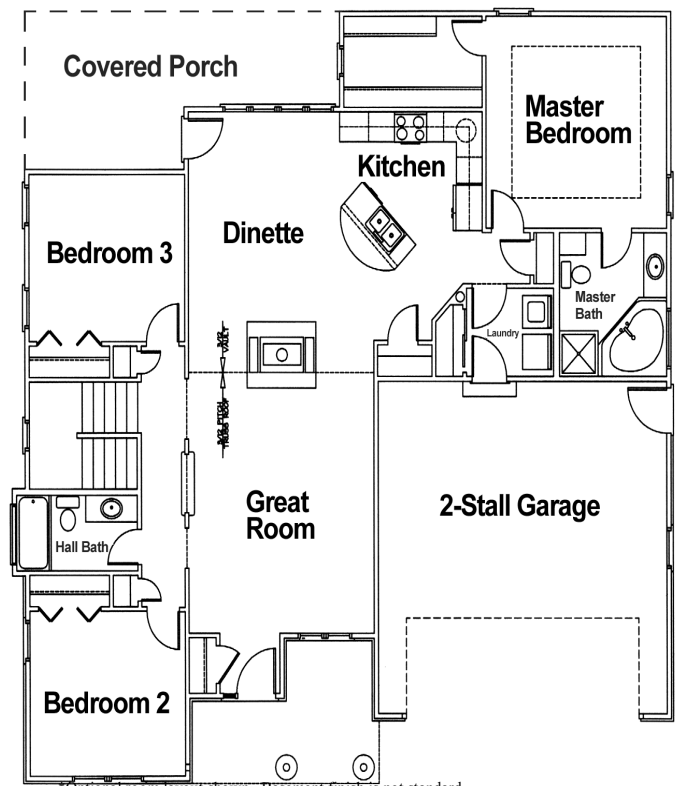


THE JORDAN



Columns grace the front porch to create an inviting entry in this Craftsman style one story home. The kitchen and dining area flows into a large great room highlighted with a two sided fireplace and vaulted ceilings. The kitchen offers ample cabinet space and a serving bar for extra seating. The covered back porch gives the finishing touch to year-round enjoyment.

MAIN FLOOR - 1638 Sq. Ft.



*Optional room layout shown. Basement finish is not standard.

Underwood Construction Company, LLC. reserves the right to alter or discontinue these architectural plans and specifications. Slight variations in specifications do not incur any obligation on the part of the builder. Some features in the models shown are optional and therefore have additional costs associated with them. All dimensions and footage calculations are approximate. Actual designs may vary. These renderings are provided for illustrative and marketing purposes only and are subject to change. No reproductions or other use of these plans may be made without the express written consent of Underwood Construction Company, LLC.

UNDERWOOD

● CONSTRUCTION COMPANY L.L.C. ●

www.BestHomesBuilt.com