

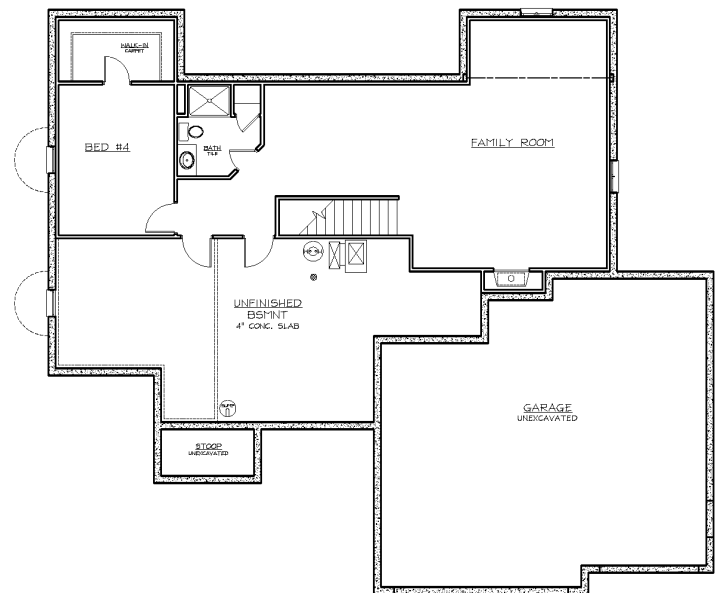
THE DANIEL



Stone and siding combine curb appeal with low maintenance while side and transom windows on the front door add natural light into the home. The efficient floor plan defines rooms without enclosing space. Privacy is assured with the split bedroom floor plan. The dining room and kitchen provide open space for dinner parties and casual get-togethers. The full basement offers additional living space with a large family/entertainment room with fireplace and room for two additional bedrooms and a third bathroom.



MAIN FLOOR - 1613 Sq. Ft.



Finished BASEMENT - 991 Sq. Ft. / Foundation 1613 Sq. Ft.



*Optional room layout shown. Basement finish is not standard.

Underwood Construction Company, LLC. reserves the right to alter or discontinue these architectural plans and specifications. Slight variations in specifications do not incur any obligation on the part of the builder. Some features in the models shown are optional and therefore have additional costs associated with them. All dimensions and footage calculations are approximate. Actual designs may vary. These renderings are provided for illustrative and marketing purposes only and are subject to change. No reproductions or other use of these plans may be made without the express written consent of Underwood Construction Company, LLC.