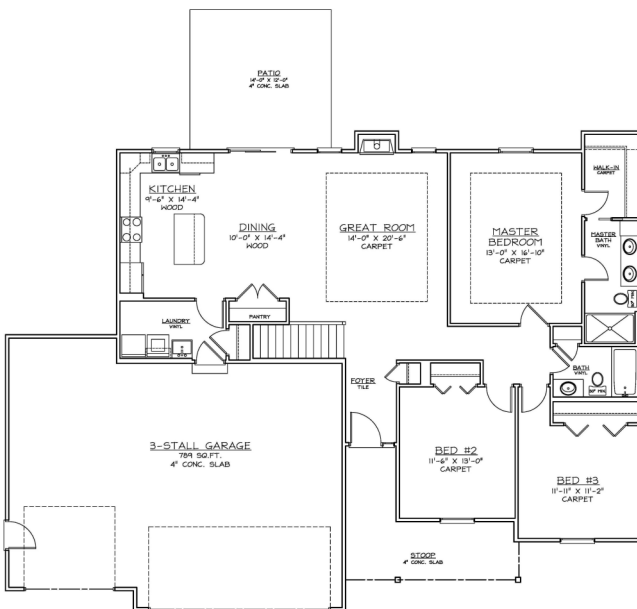


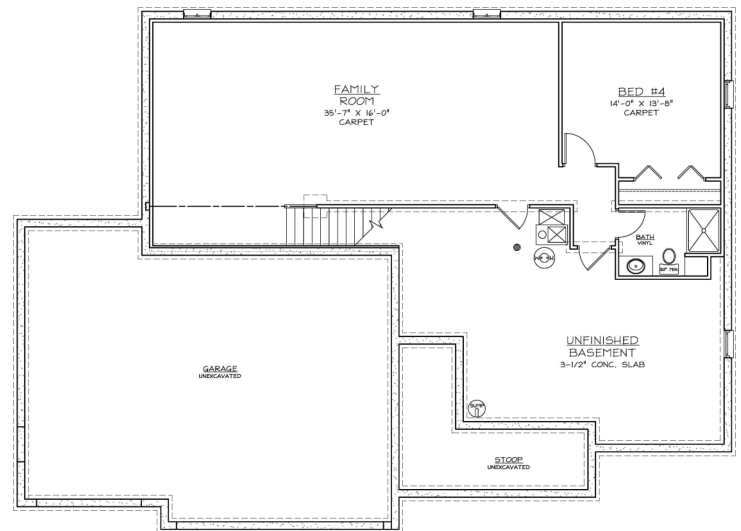
THE FINLEY



Upstairs-downstairs-inside-out you'll be pleased with all this home has to offer! The innovative open floor plan puts today's most luxurious home design features into one attractive package. This home features a large open great room with fireplace. The kitchen is generously sized with center island breakfast bar and a large pantry. The kitchen and dining area both have wood floors. The master suite provides a private bath with double vanity and a large walk-in closet. Two additional bedrooms plus laundry room with sink complete the first floor. The basement includes room for a family room that provides lots of room for entertaining and/or gaming, options for a 4th and 5th bedroom and 3/4 bath.



MAIN FLOOR - 1562 Sq. Ft.



BASEMENT - 1562 Sq. Ft.

*Optional room layout shown. Basement finish is not standard.

UNDERWOOD

● CONSTRUCTION COMPANY L. L. C. ●

www.BestHomesBuilt.com

Underwood Construction Company, LLC. reserves the right to alter or discontinue these architectural plans and specifications. Slight variations in specifications do not incur any obligation on the part of the builder. Some features in the models shown are optional and therefore have additional costs associated with them. All dimensions and footage calculations are approximate. Actual designs may